

Aero-Jet™ High Pressure Grout pump

Series 3500

The Aero-Jet™ Series 3500 is portable, low to medium, single-acting cylinder, grout pump powder module that is favored by contractors for a wide variety of construction, demolition, and restoration applications. The easily accessible controls offer the operator a complete range of production and pressure settings designed to pump a wide range of viscosity slurries, grouts, and epoxies at production rates of up to 16 gpm (60 l/min.)



FEATURES

- Quick disconnect fittings throughout
- Adaptable to any mixing tank feeder and delivery system
- Hardened replaceable valve seats for long life
- Easy field maintenance. Modular valve design
- Dynamic pressure adjustment range
- Non-plugging-flush clean with water
- Constant pressure regulator
- Autoplunger control

TECHNICAL SPECIFICATIONS

Model 3500-130	3 GPM - 6000 psi	11.3 LPM - 414 bar
Model 3500-140	4.5 GPM - 4000 psi	17.0 LPM - 276 bar
Model 3500-150	6 GPM - 3500 psi	22.7 LPM - 241 bar
Model 3500-200	10 GPM - 2000 psi	37.8 LPM - 138 bar
Model 3500-250	16 GPM - 1500 psi	60.4 LPM - 97 bar

Dimension 43"x 23"x 20" 1110 mm x 600 mm x 500 mm

Shipping Weight 150 lbs ships LTL (skidded) 70 kg

Fittings Choice of SAE or metric (specify) 1" Output standard

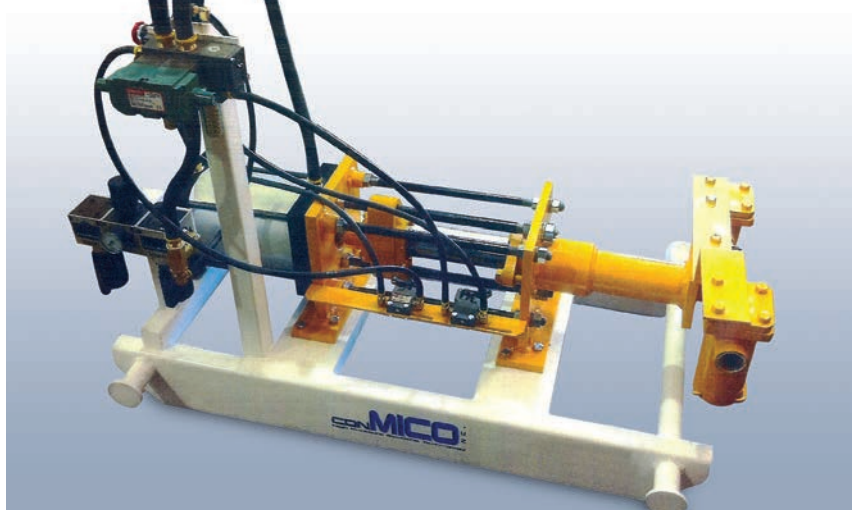
Performance Rated to available air, mix and line diameter

Operation In-line protected pressure gauge, demand feed from nozzle shut-off

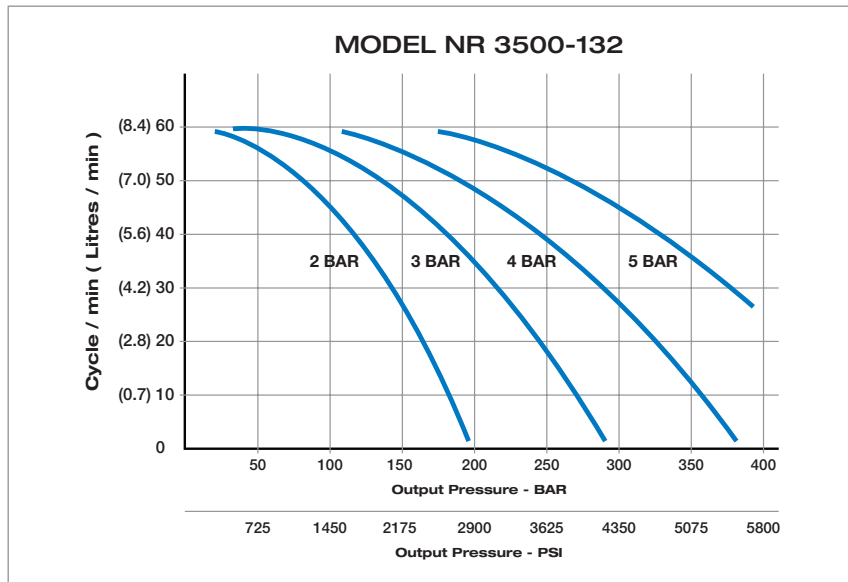
The Aero-Jet Series 3500 grout pump is the preferred choice of contractors looking for a portable, high-pressure pumping system for both above and below ground applications. Its utilized frame makes it easy to position anywhere in the work-line. The all-welded steel frame and heavy-duty mounting hardware are ready to take on any kind of job-site punishment and keep on working at full duty cycle capacity. Its modular design allows for quick field maintenance and the Aero-Jet Series cleans up quickly and thoroughly with minimal retention of residual waste. Weighing only 150 lbs, the unit is easily moved and transported around the site.

Aero-Jet™ 3500 Series

Series 3500

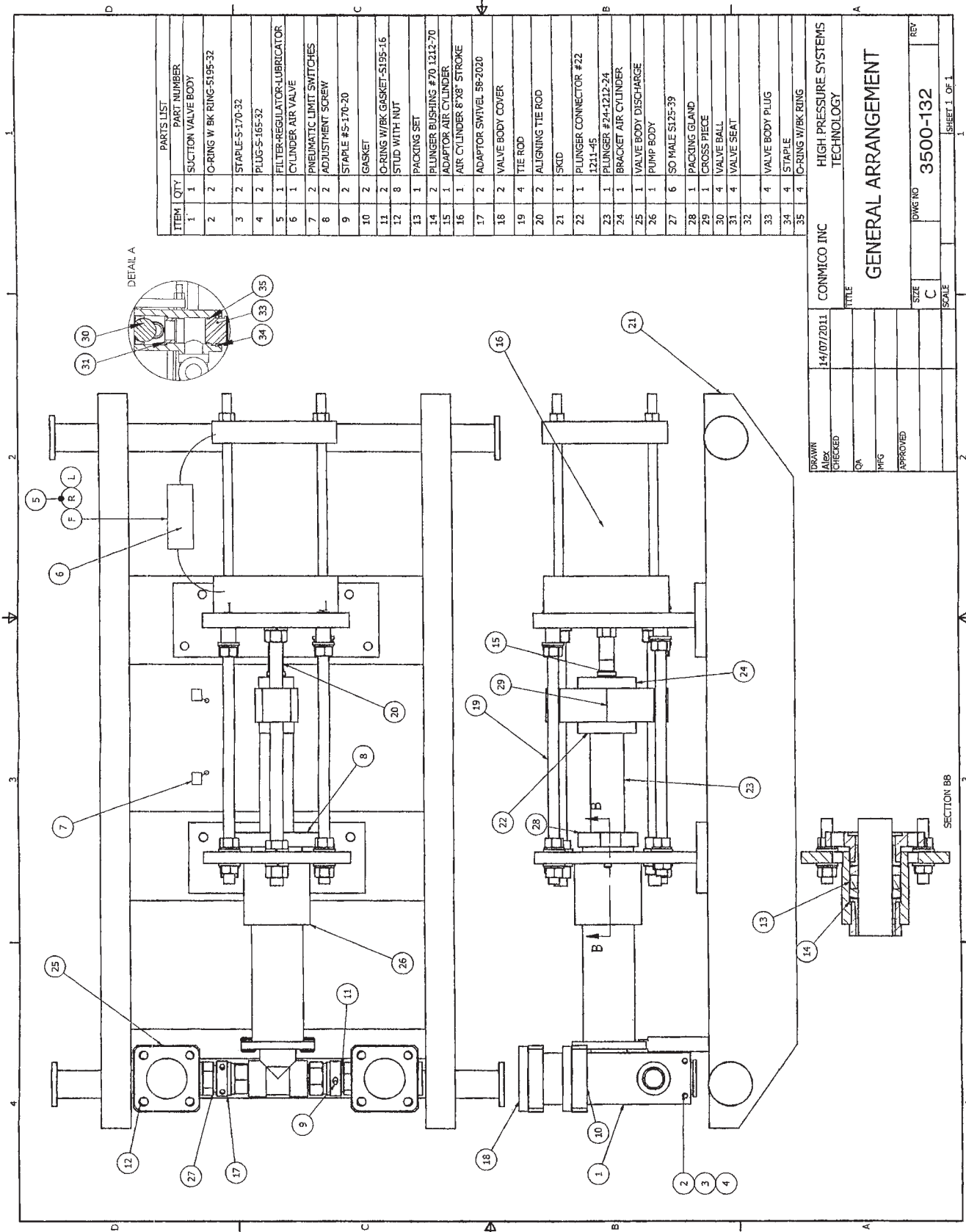


OPERATIONAL DATA FOR MODEL 3500-132



TECHNICAL SPECIFICATIONS

Maximum Pressure: 12000 psi (830 bar)
Maximum Flow: 2.38 gpm (9 LPM)
Output: 8.58 cu in (0.139 L/stroke)
Air Consumption: 33.0 cfm (935 LPM)



PARTS LIST	
ITEM	QTY
1	1
2	2
3	2
4	2
5	1
6	1
7	2
8	2
9	2
10	2
11	2
12	8
13	1
14	2
15	1
16	1
17	2
18	2
19	4
20	2
21	1
22	1
23	1
24	1
25	1
26	1
27	6
28	1
29	1
30	4
31	4
32	
33	4
34	4
35	4

CONMICO INC	14/07/2011	1
HIGH PRESSURE SYSTEMS TECHNOLOGY		2
GENERAL ARRANGEMENT		3
SIZE C	DWG NO 3500-132	4
SCALE		5
REV		6