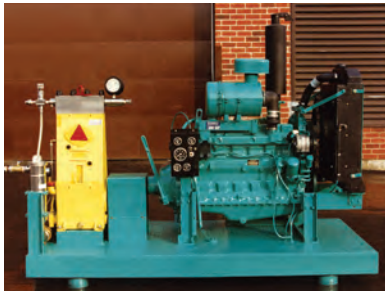


conMICO Diesel Powered “Workhorse” Solutions

All conMICO custom pump systems feature only brand-name assembly components such as CAT and Detroit diesel power plants and Hammelman high pressure pumps. Custom designed pump pressure systems are available up to 36,000 psi. Components and parts are readily available from ConMICO in Canada, and from other pump and equipment maintenance suppliers around the World.



Model 125 HP DSL

A diesel powered, portable pump system producing an output capacity of 16 GPM (US) @ 10,000 psi.

The perfect power plant and pump selection, used in mining environments for general cleaning and equipment maintenance.



Model 200 HP DSL

A 24 GPM (US) @ 10,000 psi capacity pump system, truck mounted for easy maneuverability around all industrial environments.

Ample capacity to power two hand-held lances, this unit has found favor in automotive plants where general maintenance and coating removal is required.



Model 300 HP DSL

A rugged, mobile pump system featuring a variable speed transmission capable of producing pump pressures and volumes of: 10 GPM (US) @ 10,000 psi, 24 GPM (US) @ 10,000 psi, 32 GPM (US) @ 8,000 psi, 36 GPM (US) @ 6,000 psi and 40 GPM (US) @ 5,000 psi.

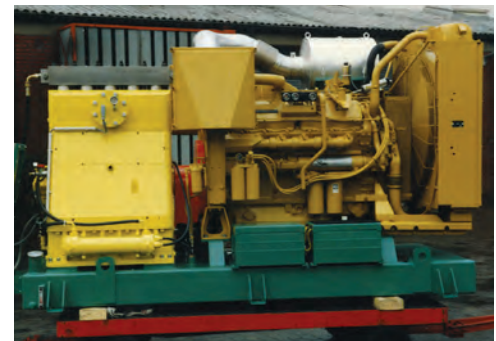
This towable vehicle is “highway approved” and is a perfect solution for contract cleaning projects in heavy industry.



Model 350 HP DSL

A heavy-duty, mobile pump system featuring a variable speed drive. The automatic transmission is capable of producing pump pressures and volumes of: 20 GPM (US) @ 20,000 psi, 25 GPM (US) @ 15,000 psi, 33 GPM (US) @ 10,000 psi and 40 GPM (US) @ 8,000 psi.

This towable vehicle is “highway approved” and has been used extensively by hydro-electric dam utilities for cleaning equipment, water tunnel flushing and in the repair of concrete structures.



Model 600 HP DSL

A skid-mounted portable pump system extensively used in the construction industry to power concrete demolition equipment. It features both high-pressure and high-volume output rated at 40 GPM (US) @ 21,750 psi.