

conMICO Electric Powered “Workhorse” Solutions

All ConMICO custom pump systems feature only brand-name assembly components such as WEG, Lincoln and Westinghouse power plants and Hammelman high pressure pumps. Custom designed pump pressure systems are available up to 36,000 psi (248 MPa). Components and parts are readily available from ConMICO in Canada, and from other pump and equipment maintenance suppliers around the World.



Model 75 HP EP

An electric powered, highly transportable pump system producing an output capacity of 7.5 GPM (US) @ 15,000 psi.

This system is used by utility companies in nuclear power plant installations to decontaminate reactor tools.



Model 75 HP EP Skid

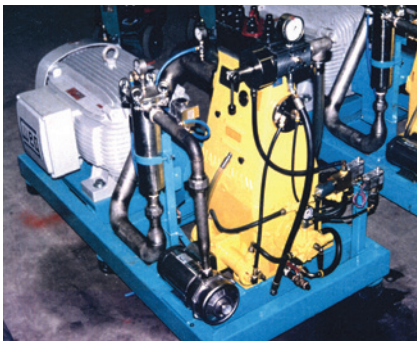
A portable pump system extensively used in the mining and construction industry to power jack-leg drill equipment as an alternative to pneumatic or hydraulic powered systems. It features a high-pressure and high-volume output rated at 36 GPM (US) @ 3,000 psi.



Model 100 HP EP

An electric powered, easily transportable pump system producing an output capacity of 14 GPM (US) @ 10,000 psi.

This system has been used by several utility companies in nuclear power plant installations to decontaminate reactor tools.



Model 200 HP EP Skid.

This version of the 200 HP pump system is a heavy-duty, high capacity pump system used in many automotive installations as a central feed source for plant removal and cleaning systems. Mounted on a structural steel frame with vibration isolation pad design.

The 200 HP electric motor and pump assembly is capable of delivering 28 GPM (US) @ 11,000 psi pressure.



Model 200 HP EP Wagon

The perfect pump solution where both performance and space is a consideration. The wagon mounted pump system is highly maneuverable in tight spaces and its 200 HP electric motor delivers 28 GPM (US) @ 11,000 psi.

The model is a favorite of automotive assembly and finishing plants for general cleanup, paint removal, grate and paint booth maintenance.



Model 300 HP EP

A permanently mounted central supply system commonly found in nuclear reactors for chemical and reactor tank cleaning operations.

Its 300 HP power system can deliver 40 GPM (US) @ 10,000 psi.

Constructed on a heavy duty steel frame and equipped with multiple isolation pads for minimum vibration transfer throughout the installation area.