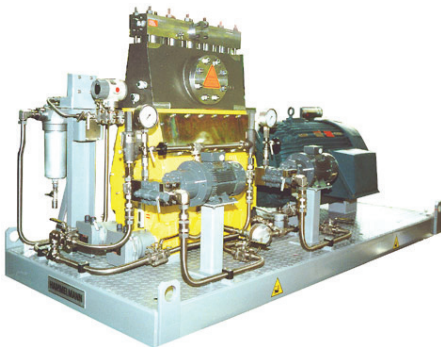


Your **Plunger Pump** Source



HDP 255: Plunger Process Pump

APPLICATIONS

Waterblast

- Up to 55,000 psi (380 MPa)

Cleaning systems

- Concrete hydro demolition
- De-scaling, Paint/Coating Removal
- Diesel or electric power
- Stationary or Mobile

Pump Systems

- Up to 55,000 psi (380 MPa)
- For jet boring
- Hydrofracturing of Rock
- Jet cutting - water or abrasive
- Surface descaling/coating removal, manual or automatic
- Process pump systems

Oil and Gas

- Chemical injection to 25,000 psi
- Methanol, asphaltine inhibitors, LDHI, Paraffin inhibitors, saltwater scale squeeze, diesel, CO2, produced water

Plunger Pumps

- Bare shaft, all applications
- Hammelmann,
 - pressures to 50,000 psi
 - horsepower to 1,000
- HPP
 - pressures to 15,000 psi
 - horsepower to 110
 - 3 year warranty



HDP 755: Plunger Process Pump